

GEOMORPHIC ABSTRACTIONS



Kenneth Lambert

Video & audio site-specific installation

June 19 - September 18, 2021

Woodford Academy, Blue Mountains

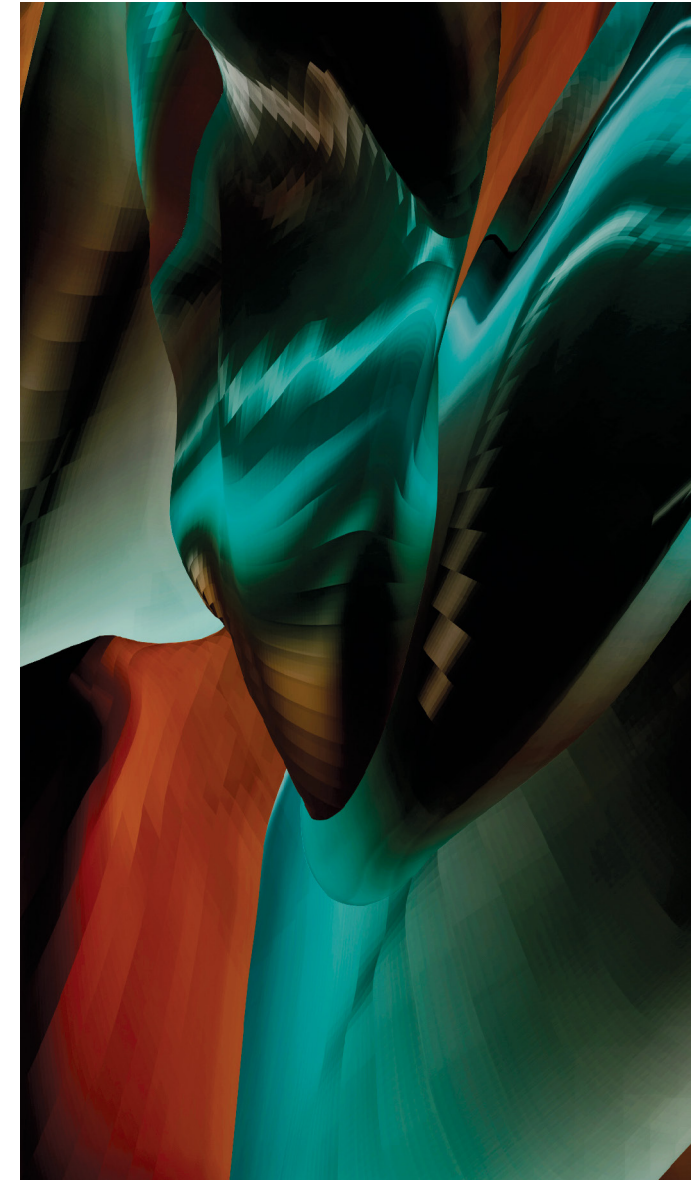
Conveying Deep Time

Geomorphic Abstractions is a series of site-specific digital works created by artist Kenneth Lambert, concluding his residency period at Woodford Academy April-May 2021.

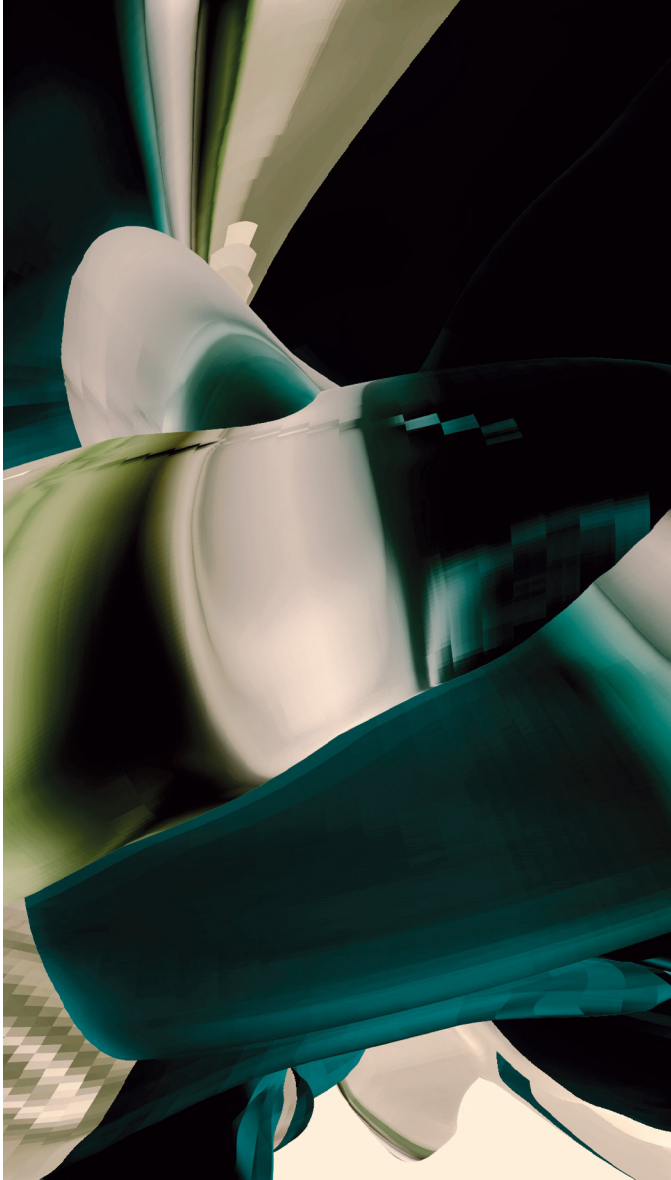
In this work, the artist explores deep time by dissolving photographic material captured on-site within the interior and exterior spaces within Woodford Academy as time-lapse sequences. The sequences were then digitally dissolved and projected over geographic forms derived from aerial maps of Woodford Academy's area. The resulting work is a series of beguiling colour fields which undulate over forms in a sustained period. The integration of sound and ever-changing colour state creates a meditation for the environment from which it was conceived.

'The Blue Mountains was created over 50 million years ago, with the Darug and Gundungurra peoples of the Ngurra country tracing back 20,000 years as its custodians. My response to a historical site like Woodford Academy, the oldest colonial building in the Blue Mountains area, evolved into the broader context of the surrounding environment and the perception of deep time. This relationship became the inspiration for my response and a way to translate the theme of spatial temporality. The perpetual nature of light tracing over an environment in the process of constant change due to geomorphic forces became a discreet way of responding to the site, whilst conveying the enduring and unique qualities of the environment which frames it.'

Kenneth Lambert



Geomorphic Abstractions 1
Edition: 1 of 3 + AP
Resolution: 1080 x 1920 pixels
Duration: 24 min with stereo audio mix
Artist: Kenneth Lambert



Geomorphic Abstractions 2
Edition: 1 of 3 + AP
Resolution: 1080 x 1920 pixels
Duration: 24 min with stereo audio mix



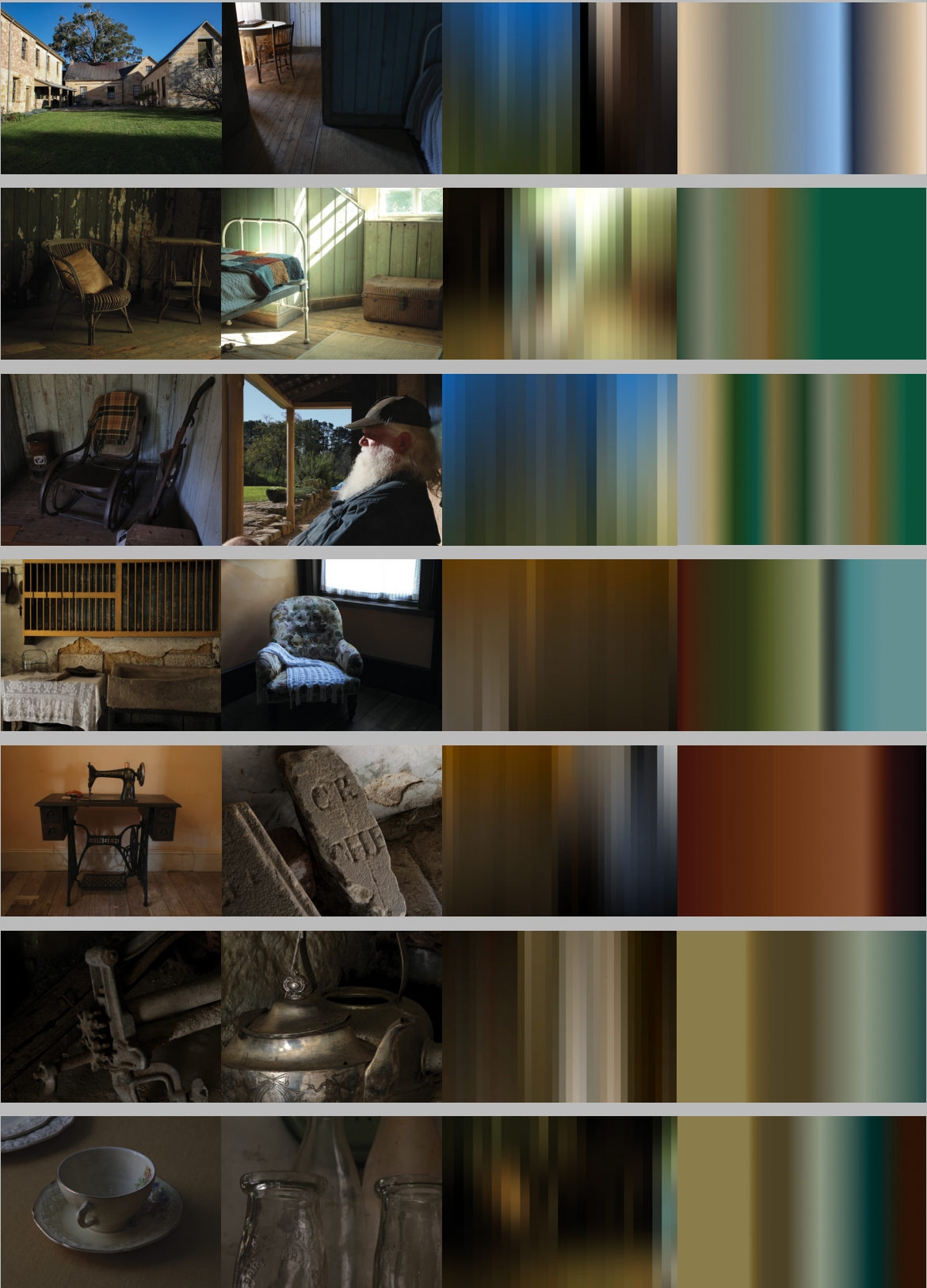
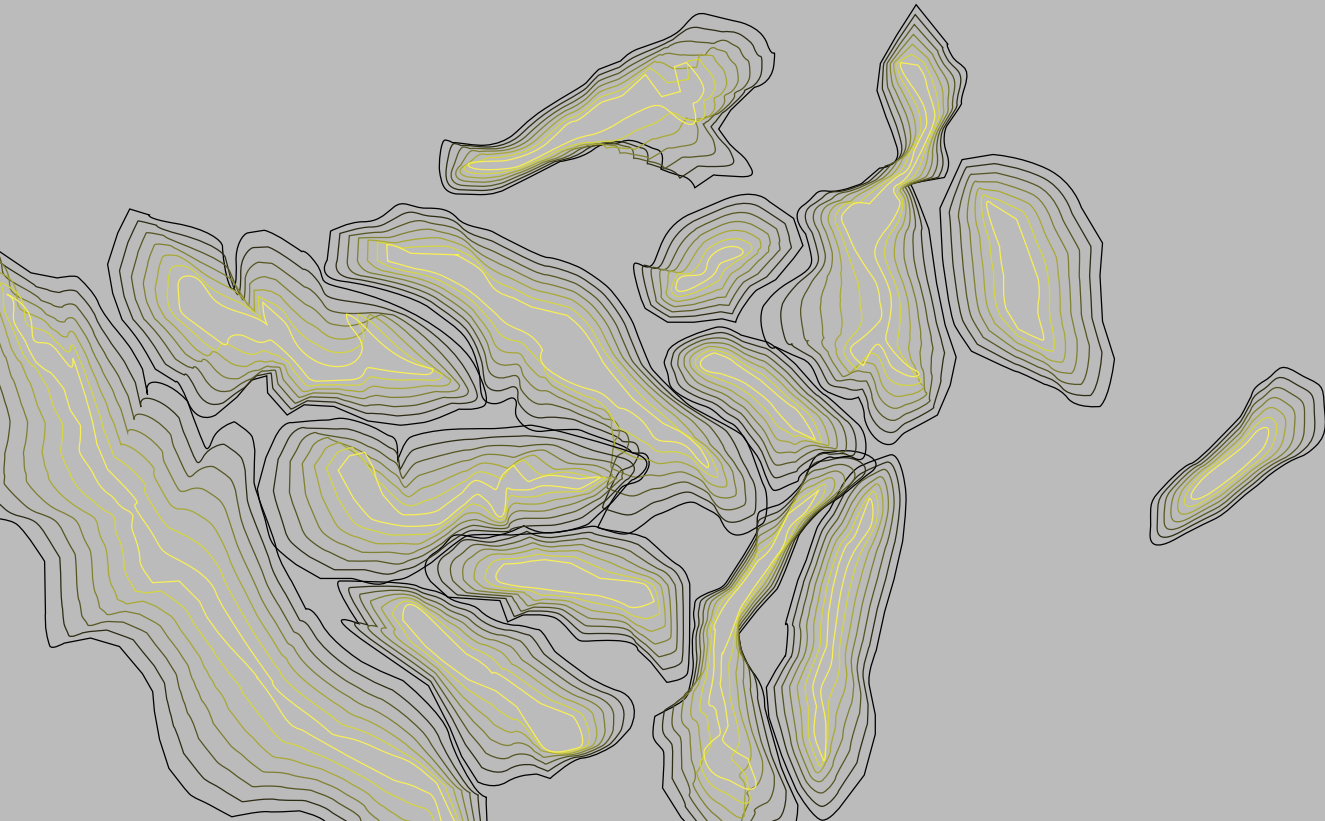
Geomorphic Abstractions 3
Edition: 1 of 3 + AP
Resolution: 1080 x 1920 pixels
Duration: 24 min with stereo audio mix
Artist: Kenneth Lambert

Artist’s Process

In creating Geomorphic Abstractions, the artist employed a unique combination of digital processes, which included photographic material translated over typographic studies derived from aerial photographs of the area. In addition, sounds recorded on-site were converted to data, which influences the movement of the digital landscape, acting as the agent of change.

Installed across three separate rooms, the final video sequences, presented on 60-inch video screens, create a compelling atmosphere for the historic home. The placement of related works draws the viewer through space, creating a contemporary installation experience within the context of a historic house.

The artist’s process can be viewed in greater detail on Instagram.
@kcl_residency.



* Pictured Above: Ian Robinson- Woodford Academy volunteer and local resident.

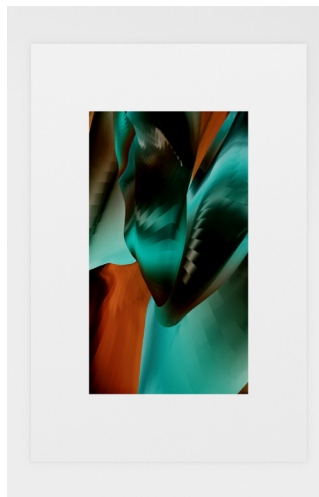


Installation View:
Geomorphic Abstractions 2
Woodford Academy Linen Room

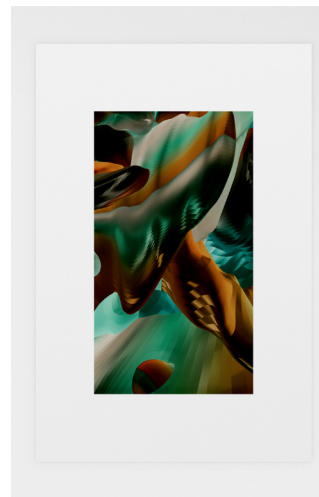


Installation View:
Geomorphic Abstractions 2
Woodford Academy Gentlemen's Room

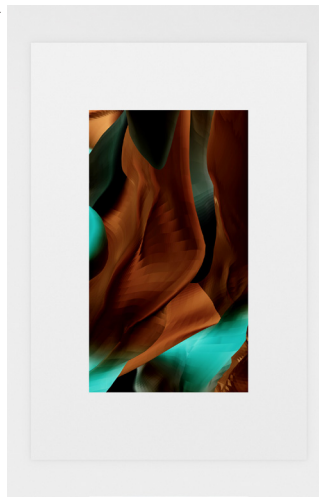
01.



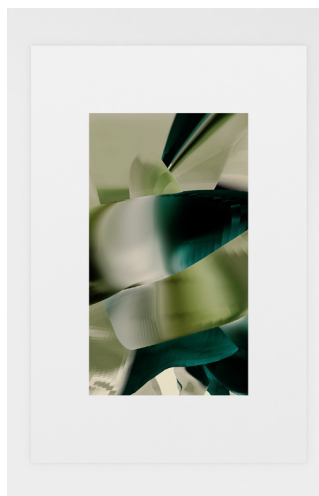
02.



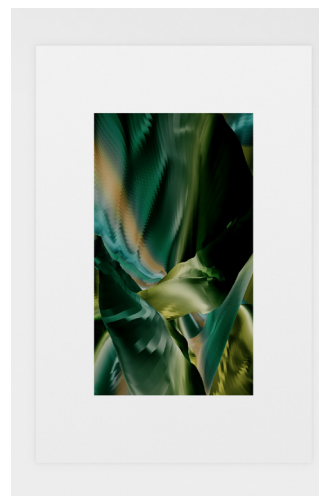
03.



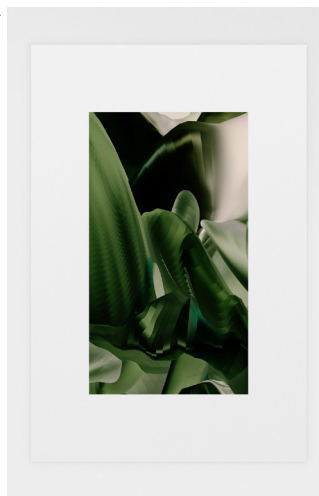
04.



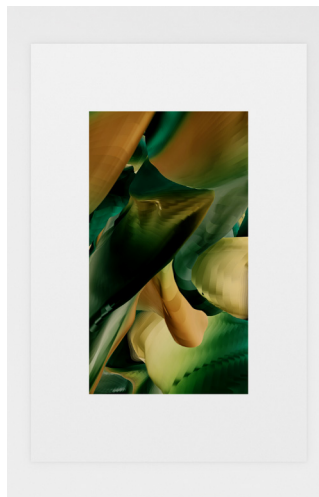
05.



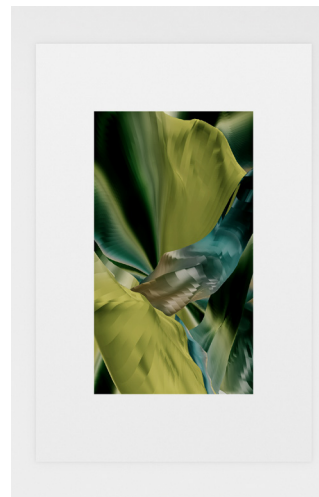
06.



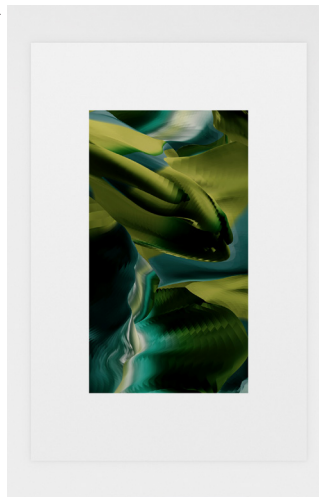
07.



08.



09.



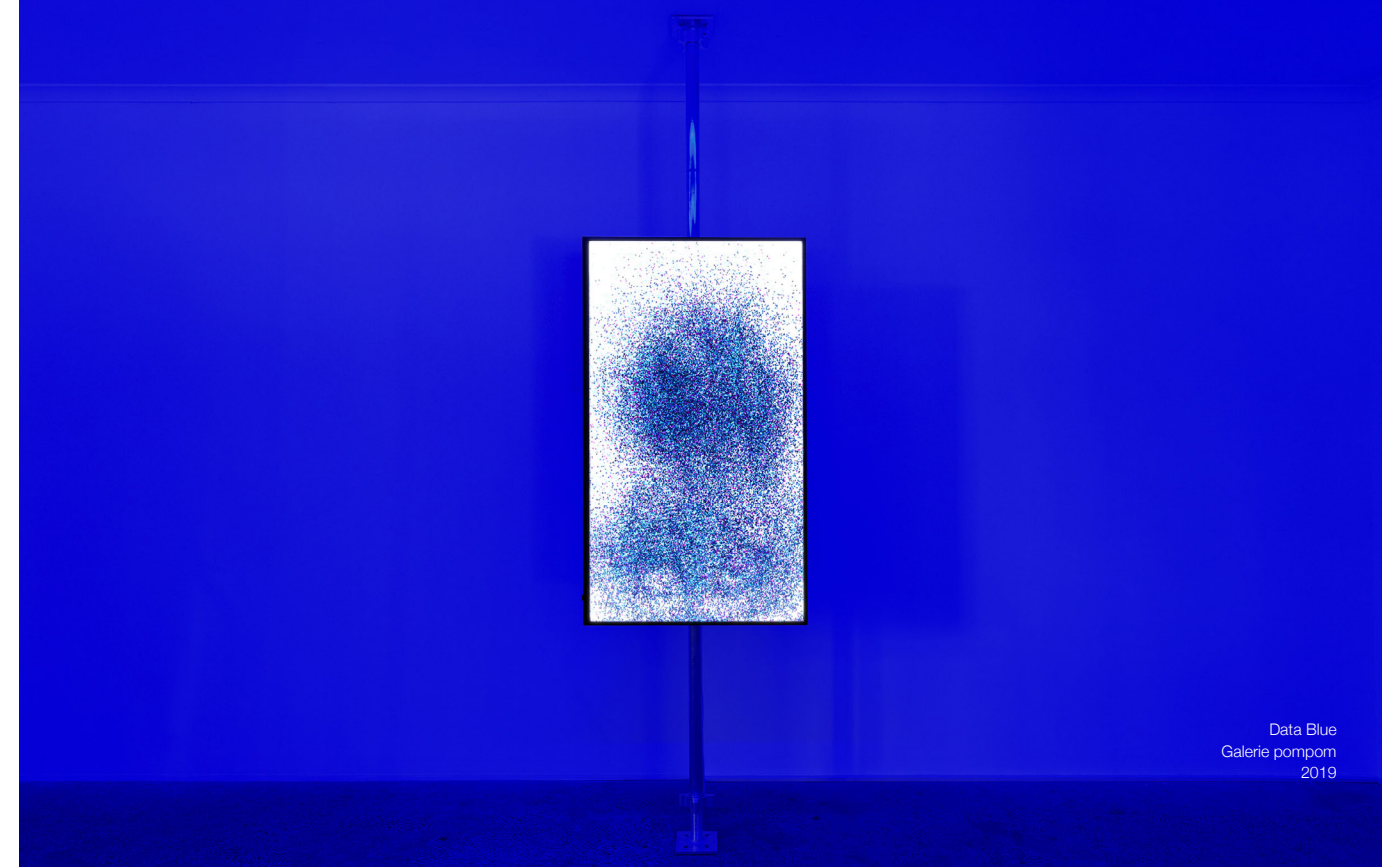
Unique Photographic Print Series (1-9)
Metallic paper, 130 gsm
Dimensions: 297 mm x 420 (A3)

About the Artist

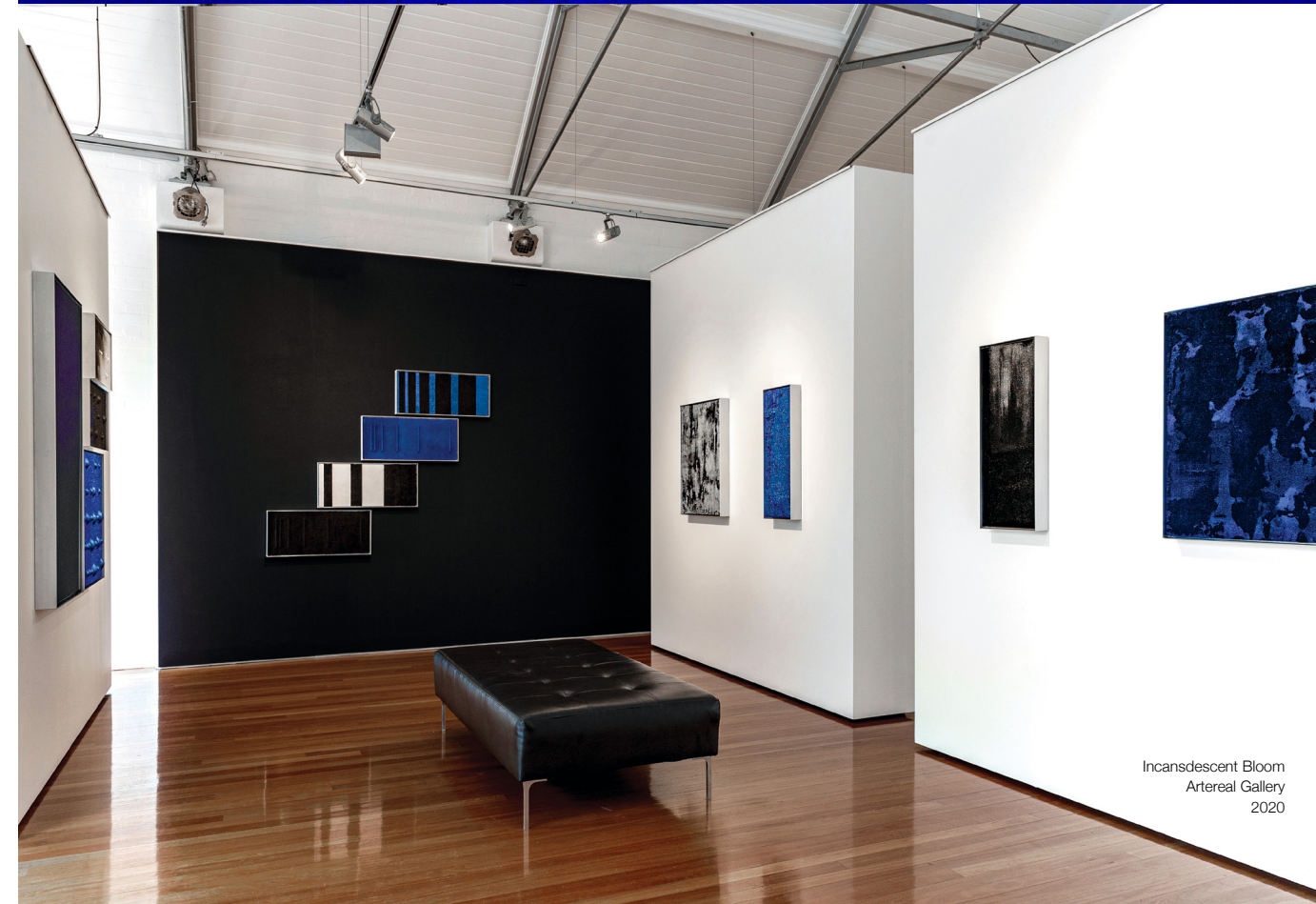
Kenneth Lambert's experimental practice embraces disintegrated matter and the inexorable expressions that reflect the human condition. Lambert's conceptual approach captures the contemporary zeitgeist by transposing themes found in science to illuminate current social issues and rising anxieties of our time. At the intersection of technology and the humanities, the artist's investigations have led to works that utilise particle acceleration to relate to climate change and data translation technology to investigate digital autonomy. Lambert's cross-disciplinary practice encompasses digital, film, painting and installation.

With a professional background that encompasses museum and exhibition design, and film making, Lambert draws on a diverse range of skills to thread through his artistic practice. Since 2016 he has regularly exhibited in both solo and group shows with Australian ARI's and commercial galleries, including Arterreal, Articulate project space, COMA and Galerie pompom. His work has featured in award shows in Australia and the USA. In 2019 he was named Grand Prix Prize Winner of the One-Self competition, which resulted in his work Data Blue featured at Scope Art Fair in Miami. In Australia, he has been a finalist in the Churchie Emerging Artist Prize, The Alice Prize, Incinerator Gallery Prize - Art for Social Change, The Fisher's Ghost Prize, and Kilgour Art Prize. Lambert has also participated in artist residency programs, receiving the 2018 Newington Armory Residency. In 2019 he completed his first international residency at Arteles Creative Centre, Finland.

kclart.com



Data Blue
Galerie pompom
2019



Incandescent Bloom
Arterreal Gallery
2020

The Woodford Academy Artist in Residence program aims to create a unique opportunity for contemporary artists to engage and explore the cultural and social heritage of the site. Woodford Academy is situated in one of the world's most environmentally and historically significant locations, the Blue Mountains World Heritage Area.

Built originally in the 1830s as a roadside inn, the Woodford Academy has a multi-layered history, operating as a gentleman's residence, guest house, boarding house and private school. In 1979 it became a National Trust property, recognised for its state heritage significance as the oldest surviving complex of colonial buildings in the Blue Mountains.

Woodford Academy Management Committee extends its gratitude to Kenneth Lambert for his participation in the inaugural Artist in Residence program and his digital works that so beautifully and profoundly respond to the site of the Academy and its surroundings and contribute to a deeper understanding and interpretation of many layers embedded in this historic location.

Acknowledgements:

We acknowledge the Traditional Owners of the land on which Woodford Academy resides, the Darug and Gundungurra peoples of the Ngurra country. We also recognise the deep and unbroken connection Aboriginal people have with the land and pay our respect to elders both past, present and emerging.

Special thanks to Beata Geyer, Director of Artistic Programs at Woodford Academy, for her guidance and support during this residency period, along with the welcoming staff and volunteers.

Exhibition catalogue designed by INK

Thanks to The National Trust (NSW) and to the Woodford Academy Management Committee. Woodford Academy is a National Trust (NSW) property.

